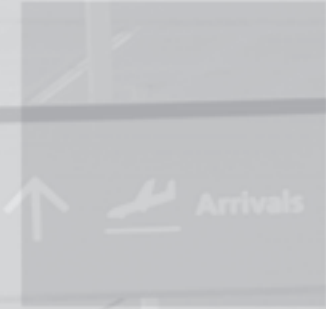


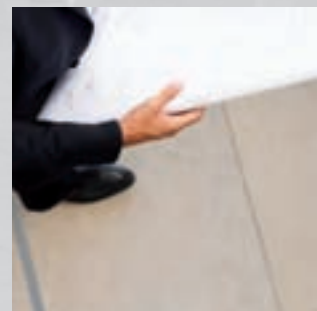
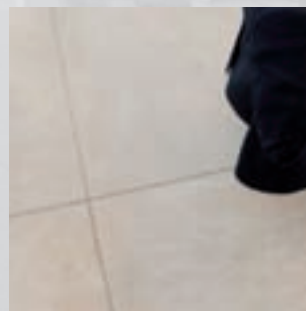
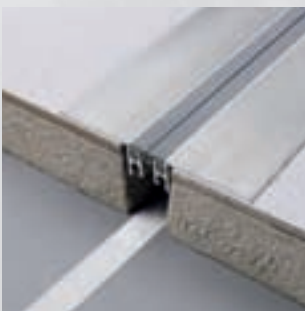
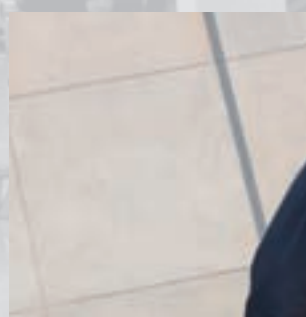


# DURAFLEX

The flexible surface



Movement  
joint  
profiles



# Flexible surfaces for control of movement

› The biggest danger for any surface is lack of flexibility. Changes in temperature, mechanical stresses and impacts can lead to uncontrolled movement in walls and floors resulting in cracks and deformation.

› DURAL faces up to this problem with a wide assortment of movement joint profiles for a whole range of demands and special solutions for specific architectural situations.





# DURAFLEX

Movement joint profile applications for the whole range of architectural needs

- › Movement joints are intended to prevent damage at the joints in an installation caused by temperature fluctuations, differing expansion coefficients in the materials used or any contraction and settling of the foundations.
- › DURAFLEX movement joint profiles can cope with such heavy stresses and distribute them evenly between the foundation and floor covering. At the same time, some movement joint profiles can prevent conduction of noise from footfall or other bodies. Even floors subject to heavy stress remain in better condition for longer if movement joint profiles are provided. DURAFLEX movement joint profiles are available for all floor coverings in a variety of materials to handle a wide range of loading.
- › The architectural need for movement joints in terms of design/aesthetics and structure is of great importance to architects and engineers alike. Only sufficient and expert use of movement joint profiles can ensure that walls and floors do not need to suffer from damaging tension and cracking over the long term.
- › DURAFLEX movement joint profiles cover the full spectrum of demands, e.g. for building partition joints, area perimeters, junction and edging joints, for control of movement and surfaces that stay flexible for longer.

› **Movement joint profiles for thin-bed installation** [PAGE 4](#)

› **Movement joint profiles for thick-bed installation** [PAGE 5](#)

› **Movement joint profiles for building partition joints** [PAGE 6](#)

› **Movement joint profiles for installation in existing locations** [PAGE 7](#)

› **Movement joint profiles for walls** [PAGE 8](#)

› **Cover profiles for walls and floors** [PAGE 9](#)

› **Movement joint profiles for heavy-stress applications** [PAGE 10](#)

› **Special solutions** [PAGE 11](#)



**Chemical resistance**



**Low-stress applications**



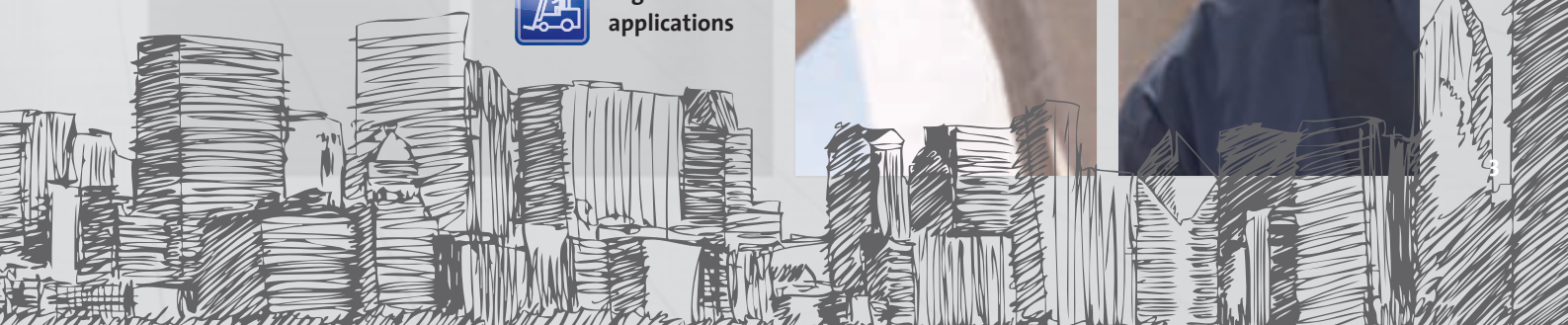
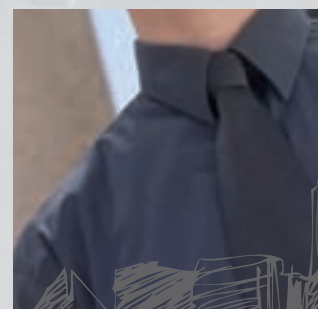
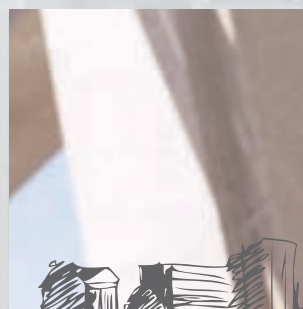
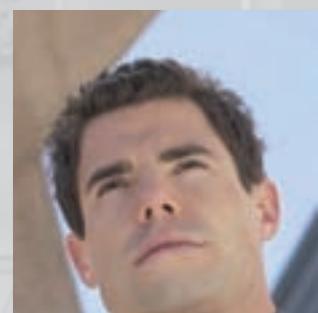
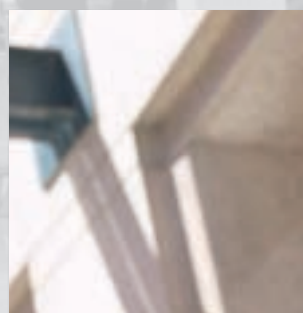
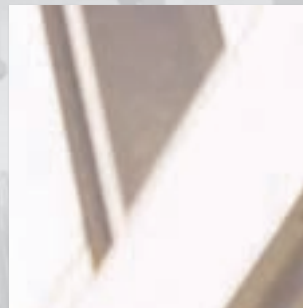
**Weather resistance**



**Medium-stress applications**



**High-stress applications**



Height: 3–30 mm  
 Width: 5–10 mm  
 Length: 250 cm  
 Material: white, beige, black and grey PVC, aluminium, brass and stainless steel

# Thin-bed installations

DURAFLEX movement joint profiles for linoleum, tiled and natural stone floors



## BUILDING DESCRIPTION:

Production facility with adjoining domestic dwelling; 450 m<sup>2</sup> of production space, 155 m<sup>2</sup> of dwelling  
 Floor: fully laid with tiles and natural stone, linoleum in offices.

**DURAFLEX PVC** in dwelling and offices, laid in doorways and on the patio.

**DURAFLEX Brass** and **Stainless Steel** divide the tiled floor of the production facility into 70-m<sup>2</sup> areas.

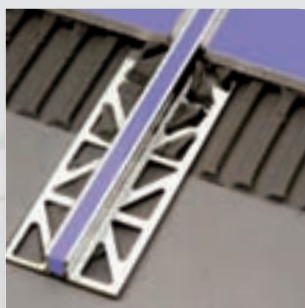


➤ **DURAFLEX with DUROSOL metal profiles** for especially heavy loading and machine cleaning. The visible surface of the profile is just 10 mm wide with both sides of the base permanently linked with a movement zone composed of EPDM rubber.

Problem foundations both indoors and outdoors require surfacing on top of DURABASE CI decoupling mats.

### Applications:

- Large domestic spaces
- Warehouses and production facilities
- Underground garages
- Shopping centres
- Domestic rooms



➤ **DURAFLEX PVC** with narrow or extra wide bases for low and medium-stress applications with a customary movement joint width of 8 mm. DURAFLEX narrow and unperforated profiles allow for quicker installation.

### Applications:

- Domestic rooms or balcony and patio floors
- Offices and shop floors or shopping centre passages



➤ **DURAFLEX PVC** extra narrow for low-stress applications. A visible width of just 5 mm means the profile can fit into the existing grid of joints. The profiles can also be used for wall edging (a break-off groove is provided on one side of the base).

### Applications:

- Domestic rooms
- Offices and exhibition spaces



Coloured infill available on request



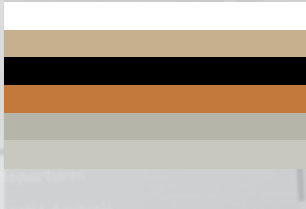
Height: 20–65 mm  
Width: 8–9 mm  
Length: 250 cm  
Material: white, beige,  
black, terracotta and grey  
PVC, aluminium, brass  
and stainless steel

# Thick-bed installations

DURAFLEX movement joint profiles for installation on vibrated concrete floors with all appropriate types of flooring



► **DURAFLEX DFP** Hard on the outside and soft on the inside, DURAFLEX PVC thick-bed profiles in six different colours provide protection for edges and handle tensions in the flooring so that cracking due to tension is specifically smoothed out. **Colours:**



► **DURAFLEX TL** with outer edges made of hard metal for enhanced edge protection even under heavier loading. TL profiles can, if necessary, be used also at edging joints, where it can be fitted to follow curves if the radius is sufficiently large. On vibrated concrete floors, TL profiles should be attached with additional anchoring. **Applications:**

- Sales floors, production spaces or warehouses with various flooring and degrees of loading leading to greater need for edge protection.



The ability of DURAFLEX thick-bed profiles to stand up to mechanical stresses is assured by means of a special certificate from the Säurefließner Vereinigung test body.



## BUILDING DESCRIPTION:

Furniture store with warehouse; 1,250 m<sup>2</sup> of sales floor, 1,750 m<sup>2</sup> of warehousing; Floor: polished granite sales floor and painted concrete flooring in the warehouse, all extensively used and subject to heavy loads.

**DURAFLEX TL** on the sales floor and in the warehouse dividing the floor into areas of 100 m<sup>2</sup>. Profiles providing enhanced edge protection are also slightly curved in the vicinity of the counter.



Height: 15–90 mm  
Width: 34 / 37 / 45 mm  
Length: 250 / 300 cm  
Material: Aluminium,  
stainless steel  
Grey and black  
EPDM inlays  
Corner installation



# Building partition joints

DURAFLEX movement joint profiles to cope with extensive movement and heavy loading

## BUILDING DESCRIPTION:

Car showroom with offices and repair workshop  
Showroom 1,240 m<sup>2</sup>, repair workshop; 360 m<sup>2</sup>.  
Floor: fine stone tiles in showroom and non-slip stone ceramic tiles in workshop  
**DURAFLEX SB** profiles divide the tiled surface in the showroom, being used for both movement joints and area perimeters. In the workshop, **DURAFLEX SG** profiles are used due to their greater resistance to chemicals



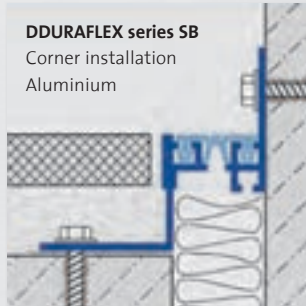
› **DURAFLEX series SB and SC** with aluminium profiles at the sides linked by specially developed elastomers. Replaceable inlays of this kind can cope with high deforming stresses while simultaneously insulating the noise of footfall.

### Applications:

- › Shopping centres
- › Sales floors in car showrooms etc.
- › Underground garages



**DDURAFLEX series SB**  
Corner installation  
Aluminium



› **DURAFLEX series SG** is highly resistant to aggressive solvents. Made of V2A stainless steel with interchangeable nitrile rubber elastic inlays able to cope with high degrees of deformation while simultaneously insulating noise.

### Applications:

- › Hospitals
- › Nursing homes
- › Production facilities





Visible width:  
90 / 150 / 175 mm  
Width of joints:  
30 / 50 mm  
Length: 400 cm  
Material: Aluminium  
Inlay: nitrile rubber,  
Corner installation

# Installation in existing locations

DURAFLEX movement joint profiles for restoration projects, to cover damaged movement joints in flooring



Öle, Fette  
Mineral-  
öle



## BUILDING DESCRIPTION:

A production space is to be renovated and expanded from 1 950 m<sup>2</sup> to 3 500 m<sup>2</sup>.  
Floor: screed with medium-sized cracks along the building partition joints in the existing area, with screed and ceramic tiles in the new section. **DURAFLEX SF** on the old surface to cover over the partition and area perimeter joints. **DURAFLEX TL** in the new area to provide protection for the production surfaces.

### > DURAFLEX SF

These elastic movement joint profiles have been specially designed for subsequent installation in existing areas subject to heavy stress. Featuring an extra wide visible surface, the profiles are adhered to the floor and are screwed down so that they can remain stable for a long time even when subjected to heavy loading. The elastic nitrile rubber joint inlay copes with expansion and contraction as well as reducing conduction of footfall noise.

#### Applications:

- > Restorations and renovation of all floor surfaces with large partition or area dividing joints.

#### DURAFLEX series SF

Aluminium  
Screwed to the floor



#### DURAFLEX series SF

Aluminium  
Corner installation



Height: 11–20 mm  
 Visible width: 34–67 mm  
 Width of joints:  
 30 / 50 mm  
 Length: 300 / 400 cm  
 Material: aluminium,  
 galvanised steel. Inlay:  
 black Corner installation



Oils, fat,  
 mineral  
 oil

# Movement joints in walls

DURAFLEX movement joint profiles for walls  
 with interchangeable elastic inlays

## Applications:

- > Large open plan offices of modular design
- > Exhibition halls
- > Foyers
- > Stairways
- > Halls and stadiums
- > Hospitals

## > DURAFLEX series KB and KC

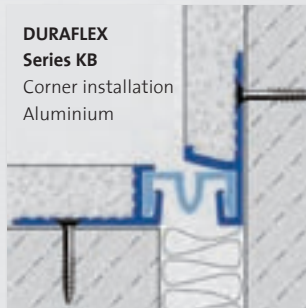
These special object profiles have been developed for durably stable covering of wide movement joints in large areas of wall. The combination of materials with expansible soft PVC in aluminium profiles and nitrile rubber in stainless profiles are both available with suitable versions for corners

## BUILDING DESCRIPTION:

Rebuilding of an office block with 127 offices with a total floor space of 8,500 m<sup>2</sup>. Walls: concrete and light post and beam construction with plaster-board planking, plastered ceiling and wall tiles. **DURAFLEX KC** along the building partition joints and splitting up wall surfaces in the vicinity of the foyer and lift, which are slightly critical from an engineering point of view. All tiled surface are edged with the corner installation version of **DURAFLEX KB**.



**DURAFLEX Series KB**  
 Aluminium



**DURAFLEX Series KB**  
 Corner installation  
 Aluminium



**DURAFLEX Series KC**  
 Galvanised steel



**DURAFLEX Series KC**  
 Corner installation  
 Galvanised steel





Width of joints: 10–60 mm  
 Visible width: 60–120 mm  
 Length: 250 / 300 cm  
 Material: white, beige and grey PVC, aluminium, stainless steel

# Junction cover profiles

DURAFLEX cover profiles for walls and floors with retaining clips and extra slim design



## > DURAFLEX KE

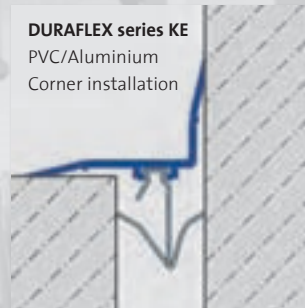
Cover profiles for junctions in walls and floors. Moveable stainless steel retaining clips make covering existing joints easy. There is also a similar design for use in corners.

### Applications:

- > All wall and floor surfaces with low traffic



**DURAFLEX series KE**  
 PVC/aluminium  
 Wall installation



**DURAFLEX series KE**  
 Retaining clips  
 Stainless steel (V2A)



**DURAFLEX series KE**  
 PVC/aluminium  
 Floor installation



**DURAFLEX series KE**  
 PVC/Aluminium  
 Corner installation

> **DURAFLEX KA** Stable, wide and extra slim, these shapely designed aluminium or stainless steel cover profiles cover joints or cracks. DURAFLEX KA profiles are screwed down to the foundations on one side or simply adhered elastically to the floor.

### Applications:

- > Hospitals
- > Production facilities requiring quality design and hygiene



**DURAFLEX series KA**  
 Aluminium/stainless steel  
 Smooth or ribbed surface, self-adhesive



**DURAFLEX series KA**  
 Aluminium/stainless steel  
 Smooth or ribbed surface held with screws on one side



## BUILDING DESCRIPTION:

An extension wing is to be built from scratch in conjunction with the partial renovation of a hospital.

Floor: tiles and linoleum in both new and old parts of the building.

**DURAFLEX KE** throughout the corridors to cover existing building partition joints and at the edges of sterile rooms (operating theatres etc.).

**DURAFLEX KA** in the foyer and ambulance entrance where traffic is heavy.



Height: 43–88 mm  
Profile width: 70 mm  
Standard width of joints:  
up to 50 mm  
Length: 400 cm  
Material:  
solid aluminium



# Movement joints in floors

DURAFLEX solid aluminium profiles  
for heavy loading, also available for joint  
widths of up to 50 mm

## BUILDING DESCRIPTION:

Newly built shopping centre  
with car park 1,400 m<sup>2</sup> of  
shopping space and 700 m<sup>2</sup>  
space for cars. Floor: granite  
floor with carpets throughout  
the shopping space and  
screed in the car park.

**DURAFLEX SE** along the large  
building partition joints and  
dividing the surface of the car  
park. At certain critical points  
heavy loading profiles are  
enhanced with an extra  
segment to cover the largest  
joints.



## > DURAFLEX SE

These profiles for  
heavy loading are used  
to cope safely with  
loads and vary large  
horizontal and vertical  
movement.

## > Applications:

- > Logistics centres
- > Large warehouses or  
production facilities,  
e.g. aircraft  
or ship builders

## DURAFLEX series SE

Solid aluminium  
Height: 43/48/58/63/68/88 mm  
Width of joints: up to 50 mm





# Special solutions

You have the joints – DURAL has the solution

> You can ask DURAL directly about testing parameters for the resistance to chemicals in expansion joint profiles, such as acid concentrations, length of exposure before effects are perceptible and temperatures at which effects can be seen.

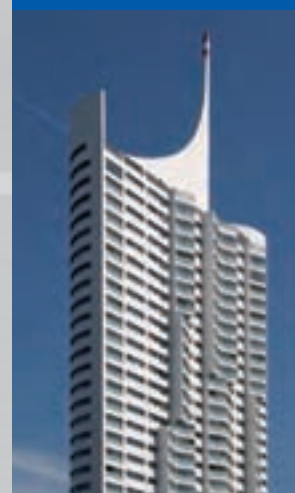
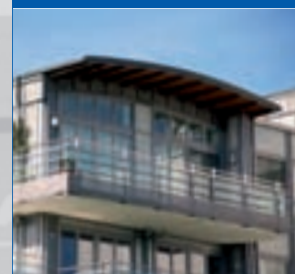
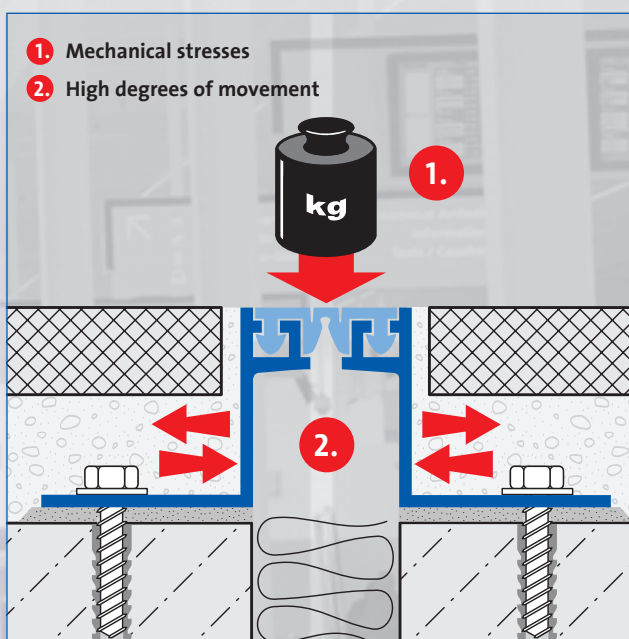


> Building partition joints, perimeter joints and standard movement joints are indispensable in the planning and design of modern buildings.

> The constant demand for new shapes, new materials and techniques demands less and less standardisation and more special solutions or extras. DURAL's standard range of movement joint profiles just form a basis for your building needs.

> Contact us if your movement joint needs our special profile solution.

> We make it simple. The CD provides detailed information on DURAL's movement joint profiles.



DURAL is your comprehensive provider  
for wall and floor profiles  
and matting systems

**DURAL**

Edging, junction profiles,  
decorative  
and divider profiles

Cover and  
junction profiles

Shower systems,  
shower drain systems

Skirting strips

Balcony corner profiles

**COVESTAR**  
active coving

Stair-edging  
profiles

Movement  
joint profiles

Systems for decoupling,  
sealing and drainage

Profile systems  
for parquet, laminate  
and carpeted floors

**DURAL GmbH & Co. KG**

Postfach 1348

D-56403 Montabaur

Tel. +49 [0] 26 02 / 92 61-0

Fax +49 [0] 26 02 / 92 61-50

welcome@dural.de

www.dural.de

Art.-Nr.: 46000203